

CryptoBIM

Blockchain-Enabled and Cryptographic Building Information Modeling

Advisor: Dr. Martin Fischer

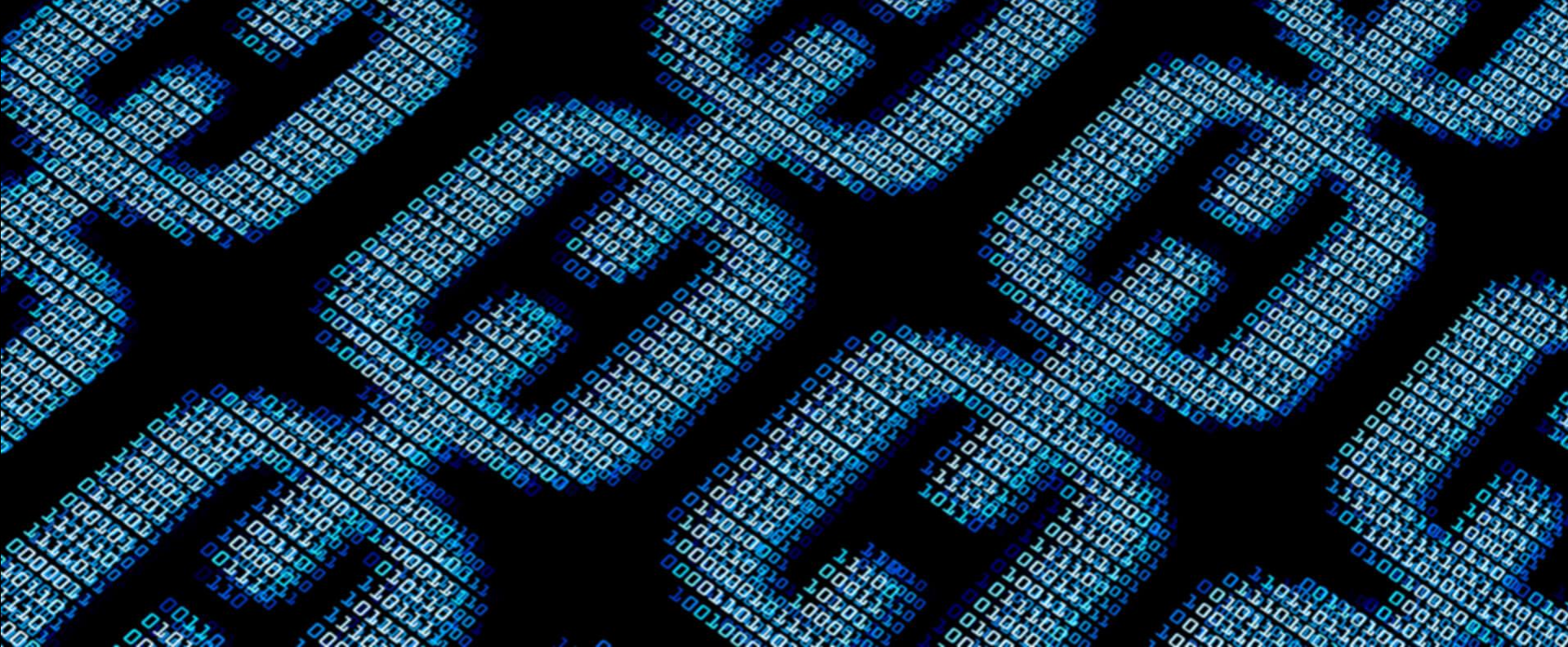
PhD student: Hesam Hamledari

CIFE IAB 2018

Nov 7, 2018

Limitations of BIM Technology

- Lack of immutable records
- Centralization
- Limited automation opportunities
- Data privacy/ownership
- Limited documentation of contributions



₿ BLOCKCHAIN

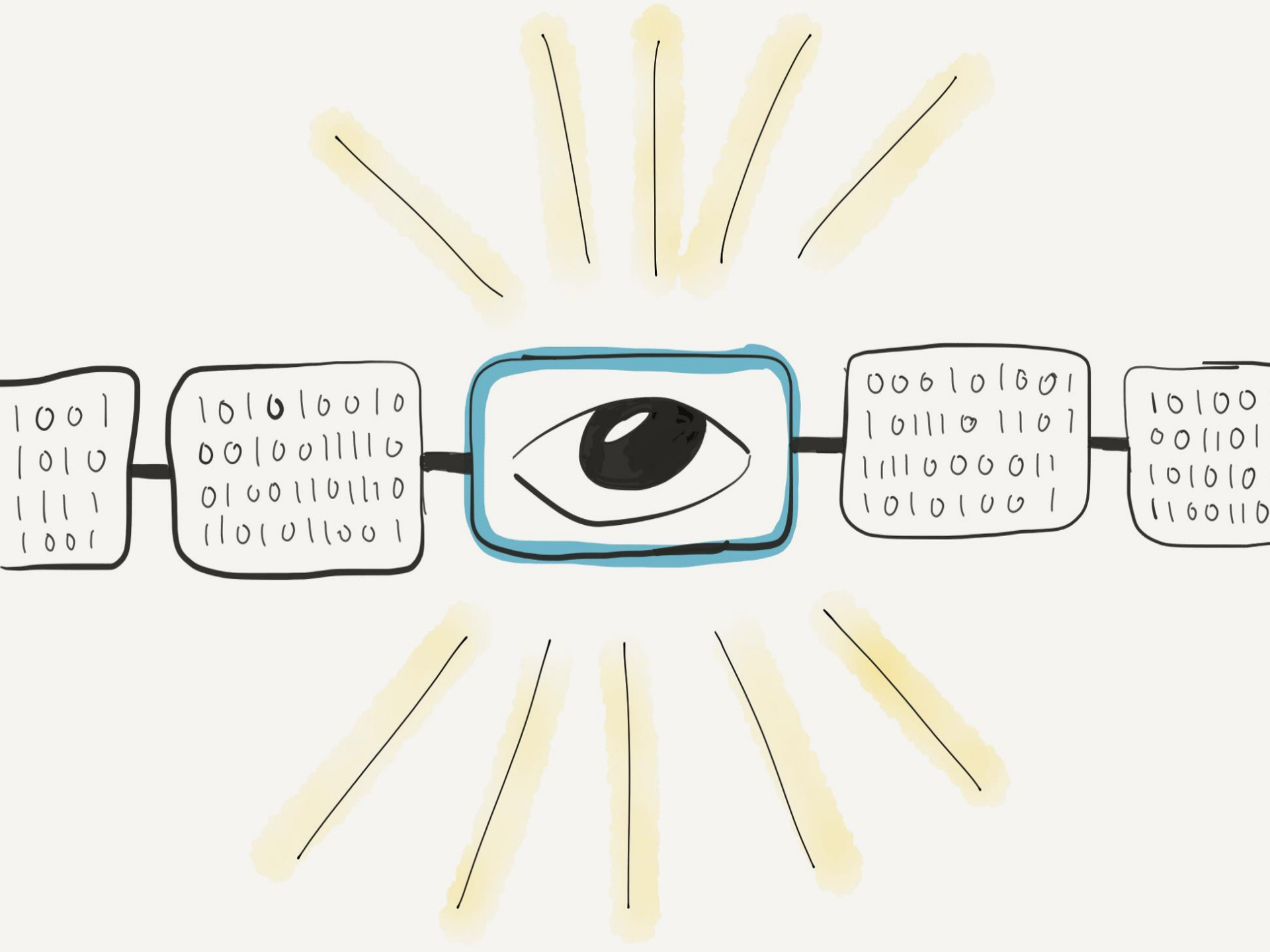


Point of Departure: Blockchain

- A peer-to-peer (P2P) network
- Curating content together
- Trust (need for intermediary)
- Decentralization:
 - Eliminating the central authority & intermediaries
 - Cryptography
 - Immutable ledger

Bitcoin





CryptoBIM-Based Processes

